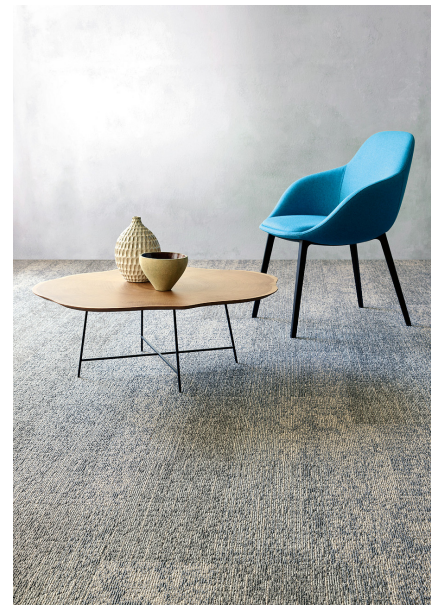


Stijlnummer	5T332	
Collectie	Simply By Nature	
Producttype	Tapijttegel	
Construction	Standard	Data + Performance
Type Fabricage	ISO 2424	tufted 1/10"   39.4 per 10cm
Uitzicht	ISO 2424	Multilevel-Patroonlus
Verfmethode	EN 994	100% In Oplossing Geverfd
Productformaat	EN 994	50 cm x 50 cm   20 tiles (5 m²) per box
Primaire Backing	ISO 2424	Pet Nonwoven
Secundaire Backing	ISO 2424	Taskworx® Tegel   Polymeer Gemodificeerd Bitumen
Vezel	ISO 2424	Ecosolution Q® Polyamide 6
Totale Dikte	ISO 1765	6.4 mm
Afgewerkte Pooldikte	ISO 1766	2.3 mm
Totale Massa	ISO 8543	4279 g/m²
Getuft Gewicht	ISO 2424	542 g/m²
Effectieve Poolmassa	ISO 8543	236 g/m²
Pooldichtheid	ISO 8543	0.103 g/cm³
Totaal Gerecycleerde Inhoud		50% (pre-consumer 50%   post-consumer 0%)

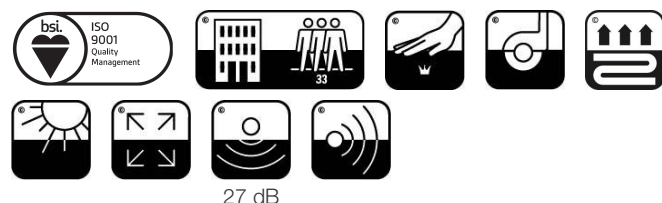
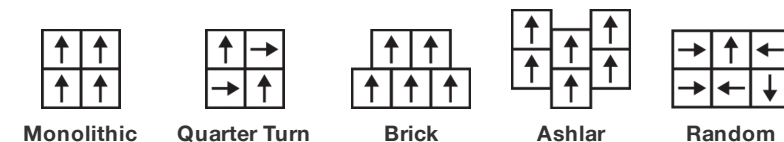


### Gegevens

Steken	ISO 1763	160,000/m²   40.7 per 10cm
Elektrostatische Weerstand	ISO 6356	≤ 2.0 kv (Stroll Test)
Gebruik Classificatie	EN 1307	33 Commercial Heavy
Luxe klasse	EN 1307	LC1
Dimensionale Stabiliteit	EN 986	≤ 0.2%
Contactgeluidsisolatie	ISO 10140	27 Db
Geluidsabsorptieclassificatie	ISO 354/11654	0.20 Aw   Class E
Warmteweerstand m² K/w	ISO 8302	0.076 M² K/W Tog 0.76
Weerstand Tegen Droog Uitglijden	ISO 13893	Pass / No Pulled Loops
Kleurvastheid Voor Licht	ISO 105-B02	>6
Ontvlambaarheid	EN 13501-1	Bfl-S1 (Adhered Testing)
Stoel Met Wieltjes	EN 985	≥2.4 Continuous USE

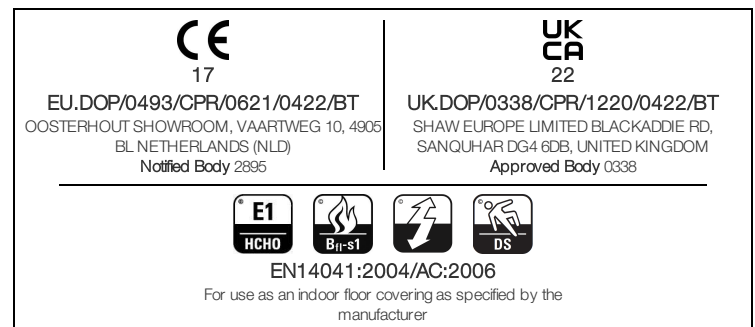
**15 Jaar Commercieel Beperkt** subject to installation in full accordance with manufacturer's instructions and a regular effective cleaning and maintenance programme.

### Aanbevolen Installatiemethode



27 dB

Corporate Headquarters +1 800 257 7429 | +1 706 532 7984 | Atlanta +1 404 853 7429 | Bengaluru +91 80 6773 0202 | Beijing +86 10 6568 588 | Chicago +1 312 467 1331 | Dubai +971 4 584 6956 | Hong Kong +852 2623 0371 | Latin America (Miami) +1 305 827 5912 | London +44 207 961 4120 | Los Angeles +1 800 233 1614 | Melbourne +61 3 9939 8543 | Mexico City +55 5010 7600 | Mumbai +91 22 6284 5050 | Nantong +86 400 800 7429 | New York +1 212 953 7429 | Paris +33 (0) 1 81 22 44 39 | San Francisco +1 415 955 1920 | Santiago +562 2431 5000 x 550 | São Paulo +55 11 3071 1702 | Shanghai +86 21 3338 4000 | Singapore +65 6733 1811 | Sydney +1 800 556 302



Coördinerende Producten

Carpet Tile: **Array Taskworx® Tile, Offset Taskworx® Tile, Structure Taskworx® Tile**

Kenmerken + Certificeringen

Certifications Below Apply Exclusively To The Carpet Tile Rug Itself And Not The Lokworx Tabs Adhesive

Declaration of Performance	<b>EU.DOP/0493/CPR/0621/0422/BT</b>
Cradle to Cradle gecertificeerd™	<b>Bronzen Vlak (Versie 3.1)</b>
Environmental Product Declaration (EPD)	<b>3de Partij Gecertificeerd in Overeenstemming Met ISO14044, ISO14025 &amp; EN15804</b>
Building Research Establishment (BRE)	<b>A+ Health/A+ Retail 0.34/0.453 Ecopoints</b>
milieugarantie	<b>Terugnamebeleid Aangeboden Voor Alle Taskworx Producten</b>
ISO 9001	<b>Gecertificeerd</b>
land van herkomst	<b>Verenigd Koninkrijk</b>
BREEAM Contribution Credit	<b>Certificate of Approval Schools/Offices/Health/Industrial Shed Retail</b>

Well V2 Contribution Credit

X08 Hazardous Material Reduction Part 1: Limit Hazardous Materials Optimization	<b>C2C Bronze Level (Version 3.1)</b>
X10 Volatile Compound Reduction Part 1 (A): Manage Volatile Organic Compounds (VOCs) Optimization	<b>C2C Bronze Level (Version 3.1)</b>
X10 Volatile Compound Reduction Part 2: Manage Semi-Volatile Organic Compounds (SVOCs) Optimization	<b>C2C Bronze Level (Version 3.1)</b>
X11 Long Term Emissions Control Part 2: Flooring Optimization	<b>M1&gt; Emissions Class For Building Material</b>
X13 Enhanced Material Precaution Part 1: Select Optimized Materials Optimization	<b>C2C Bronze Level (Version 3.1)</b>
X14 Material Transparency Part 1: Promote Ingredient Disclosure Optimization	<b>C2C Bronze Level (Version 3.1)</b>

Groen Leed Bijdragekrediet

"MR-krediet: openbaarmaking en optimalisering van bouwproducten Milieuproductverklaringen - Optie 1: Milieuproductverklaring (EPD)"	<b>3rd Party Certified in Accordance with ISO14044, ISO14025 &amp; EN15804</b>
"MR-krediet: Openbaarmaking en optimalisering van bouwproducten Materiaalingrediënten - Optie 1: Rapportage materiaalingrediënten"	<b>C2C Bronze Level (Version 3.1)</b>
"MR-krediet: openbaarmaking en optimalisering van bouwproducten Materiaalingrediënten - Optie 2: Optimalisering van materiaalingrediënten"	<b>C2C Bronze Level (Version 3.1)</b>

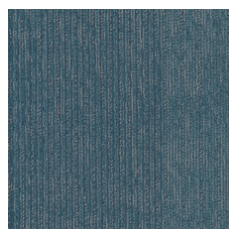
Air Quality

Indoor Air Comfort Gold	<b>Certified</b>
M1	<b>Certified</b>

Memberships

WGBC Framework	<b>WGBC Framework</b>
UKGBC	<b>UKGBC</b>
Emirates Green Building Council	<b>Emirates Green Building Council</b>
Chemsec	<b>Chemsec</b>

## Lichtreflectiewaarde



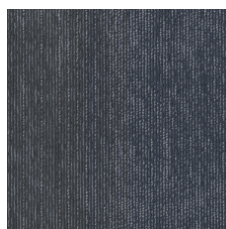
Reflection 94323  
LRV 8.9



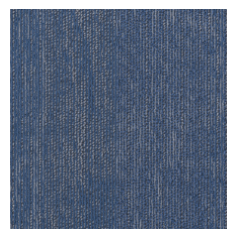
Mountain View 94326  
LRV 14.1



Glassy Green 94335  
LRV 7.9



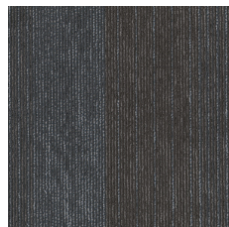
Shimmery Blue 94485  
LRV 6.2



Blue Belle 94486  
LRV 8.1



Chrome Black 94500  
LRV 4.8



Glossy Charcoal 94505  
LRV 5.1



Sterling Silver 94515  
LRV 13.8



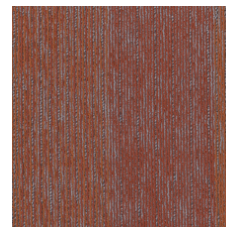
Steel Grey 94530  
LRV 8.3



Mirror Grey 94535  
LRV 13.8



Polished Stone 94557  
LRV 7.3



Golden Gate 94668  
LRV 8.9



Metallic Beige 94760  
LRV 16.1



Shiny Pebble 94761  
LRV 11.3

## Aanvullende Informatie

\*\*Manufactured in ISO 9001 certified facility. Meets or exceeds all local and national regulations in country of manufacture.

[Installation Guidelines](#)

[Maintenance Guidelines](#)

15 jaar commercieel beperkt

Specifications are subject to nominal manufacturing variance. Material supply and/or manufacturing processes may necessitate changes without notice.

This product is an exclusive design and may not be duplicated in any manner. Use of this design in the creation of another product design is also strictly prohibited.

Visit [shawcontract.com/testing](http://shawcontract.com/testing) for more information.



Corporate Headquarters +1 800 257 7429 | +1 706 532 7984 | Atlanta +1 404 853 7429 | Bengaluru +91 80 6773 0202 | Beijing +86 10 6568 588 | Chicago +1 312 467 1331 | Dubai +971 4 584 6956 | Hong Kong +852 2623 0371 | Latin America (Miami) +1 305 827 5912 | London +44 207 961 4120 | Los Angeles +1 800 233 1614 | Melbourne +61 3 9939 8543 | Mexico City +55 5010 7600 | Mumbai +91 22 6284 5050 | Nantong +86 400 800 7429 | New York +1 212 953 7429 | Paris +33 (0) 1 81 22 44 39 | San Francisco +1 415 955 1920 | Santiago +562 2431 5000 x 550 | São Paulo +55 11 3071 1702 | Shanghai +86 21 3338 4000 | Singapore +65 6733 1811 | Sydney +1 800 556 302